



EXECUTIVE MBA



**ESMT
BERLIN**

OPEN THE DOOR
TO SENIOR MANAGEMENT

Index

WELCOME AND KEY PROGRAM FACTS 4-5

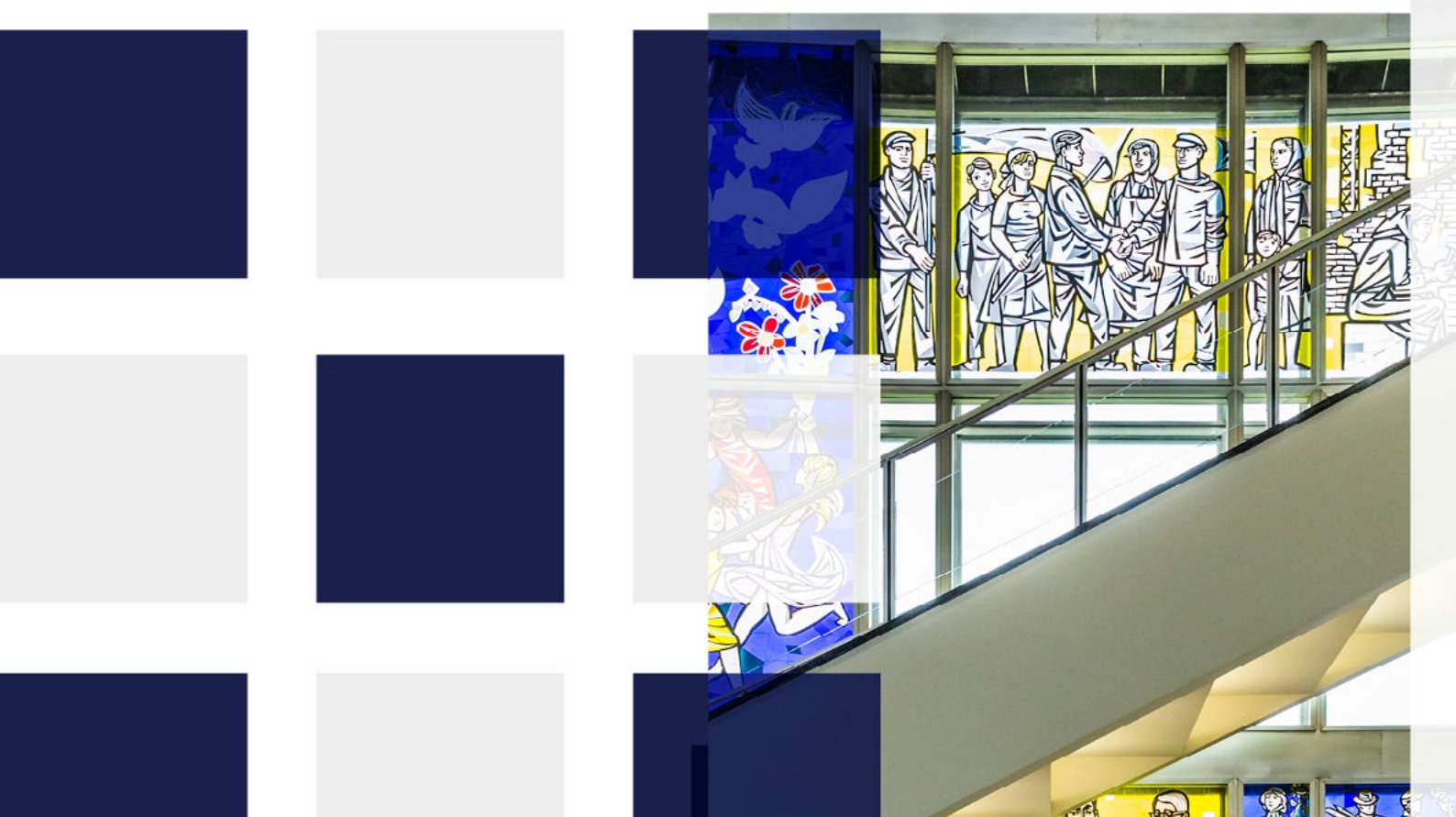
PROGRAM HIGHLIGHTS 6

CURRICULUM AND TIMELINE 7-9

BENEFITS FOR YOUR CAREER 10-11

APPLICATION AND ADMISSION 12-13

CLASS PROFILE 14-15



**FROM THE
HEART OF
EUROPE WE
CREATE AND
IMPART NEW
KNOWLEDGE
TO ADVANCE
BUSINESS AND
SOCIETY.
WE DEVELOP
ENTREPRENEURIAL
LEADERS WHO
THINK GLOBALLY
AND ACT
RESPONSIBLY.**





WELCOME - WILLKOMMEN

Are you ready for the challenges of Leadership?

Recent world developments have underscored the importance of responsible, competent leaders, who are prepared to engage with the broader communities their organizations are embedded in.

At ESMT Berlin, we are committed to developing and investing in tomorrow's leaders, imparting the latest knowledge from across the world of business so that you can navigate the challenges of leadership.

In the Executive MBA program you will:

- Develop the key skills required of a general manager
- Learn how to drive innovation in a responsible, sustainable way
- Network with, and learn from your classmates
- Study part-time while you are still working, so you can apply your new skills to your role straight away.

We look forward to welcoming you to ESMT and guiding you on your path towards tomorrow's leadership.

KEY FACTS



TOP-RANKED

#1 business school in Germany



FORMAT

Part-time
Modular



18 Months

6 modules in Berlin
+ 4 global modules



FOCUS AREAS

General Management
Technology & Innovation
Management Leadership
Development



LANGUAGE

English



APPLIED LEARNING

a final project in your
own company



ALUMNI IN

40+ COUNTRIES



INTERNATIONAL MODULES:

Leading For Business Success
Global Network Week
Academy Of Management
International Field Seminar

OPEN THE DOOR TO SENIOR MANAGEMENT

The Executive MBA is designed to deliver the experiences and skills that are needed to become an effective global leader.

Learn from top international faculty, industry experts and highly ranked executive coaches through interactive classroom experiences, and online study sessions.

Put your new skills and insights to the test in case studies, group exercises, company projects and business simulations, and prepare to translate modern management concepts into action.



Prof. Konstantin Korotov

Professor of Organizational Behavior
and Faculty Lead of the Executive MBA Program,
ESMT Berlin



Dr. Rosa Peter
EMBA Alumna, Germany

Position after leaving ESMT:

General Manager
Process Technology,
Hüttenwerke Krupp
Mannesmann GmbH,
Germany

Deciding to do an EMBA at ESMT was one of the most formative steps in my professional career. The case study approach and discussions in class opened up new perspectives. The concepts I learned help strengthen me as a person in a leadership position. The biggest value for me is the close relationships with classmates. My class was diverse in every sense, which showed me life and business from perspectives I was not aware of. Having a group of highly experienced peers to call on is definitely a competitive advantage in my professional life and for my company.



Ines Amri
EMBA Alumna, Tunisia

Position after leaving ESMT:

Director of Strategic
Partnerships,
Amparo, Germany

I have enjoyed belonging to such a diverse community of leaders and professionals, and helping each other's growth and development – be it personally or professionally. As aspiring leaders, learning from each other and staying on top of these intellectually stimulating topics, which are affecting our lives and even existence, is an opportunity that we should not miss.



Michael Quaden
EMBA Alumnus,
Germany

Position after leaving ESMT:

Senior Manager –
Risk & Regulatory,
PwC Deutschland

It is not only the EMBA academics that are of immeasurable value; it is everything that compliments this endeavor. Close personal support during the program, including mentorship, the friendships that you develop with your classmates, and the global networks you build during the international modules are all added value.



PROGRAM HIGHLIGHTS

PERSONALIZED LEADERSHIP DEVELOPMENT

During the Executive MBA you will develop your skills as a leader and prepare for the challenges of leadership:

- Gain greater self-awareness in regards to your leadership style and learn new interpersonal skills.
- Be supported in your professional growth by executive coaches and the program's academic director.
- Learn the art of peer coaching by practicing with your fellow classmates
- Get actionable, real-world insights from experienced global C-level leaders

APPLY YOUR NEW SKILLS IMMEDIATELY

The Executive MBA is a part-time program, allowing you to balance your executive training with existing responsibilities:

- Each one-week module takes place roughly every two months
- Complement each in-person module with remote study
- Continuously apply your new insights and skills in your current role
- Conduct a consulting project for your organization as part of your final report

BECOME AN INNOVATIVE LEADER

The program will not just prepare you to effectively take on the challenges of general management, but prime you to be a change-maker and innovator, able to develop and deploy new products or technologies.

Courses on strategic entrepreneurship, digital business strategies, and design thinking will all support this goal.

LEAD FOR BUSINESS SUCCESS

The international modules will allow you to experience a particular business topic and its relation to real-world scenarios in different markets and sectors:

During **Network Week**, study at one of our partner schools in the Global Network For Advanced Management. Schools include HEC, Yale, Berkeley, HKUST, NUS, and more.

The one-week **ESMT International Field Seminar (IFS)** offers real-world experience of conducting business abroad. You will lead an international project inside the offices of global companies and exciting new startups. Recent seminars took EMBA classes to Argentina, Malaysia, Turkey, and South Africa.

A photograph of a woman with long brown hair, smiling and looking upwards and to the left. She is wearing a dark top and a small hoop earring. In the background, other people are blurred, suggesting a classroom or lecture hall environment. A white text box is overlaid on the top left of the image.

EXECUTIVE MBA CURRICULUM AND TIMELINE

2023

Module 1

October 9 - 14
6 days

Responsible Leadership

- Introduction to General Management
- Making Responsible Decisions
- Leadership in Practice
- Being a Responsible Leader
- Data Analytics for Responsible Leaders

Module 2

November 27 - December 2
6 days

Navigating Markets

- Marketing Management
- Economic Thinking
- Business Strategy

Coaching Day

January 20, 2024
(online)

2024

Module 3

February 12 - 17
6 days

Running Efficient Organizations

- Managerial Accounting and Sustainable Finance
- Financial Management and Corporate Finance
- Operations and Supply Chain

Module 4

April 22 - 27
6 days (abroad)

Leading for Business Success

- Corporate Strategy and M&A
- Organizational Behavior
- Operational Sustainability in a Circular Economy
- Debrief Simulation

Module 5

June 10 - 14
5 days (abroad)

Global Network for Advanced Management Network Week

Module 6*

August 9 - 13
5 days (abroad)

TBD

Six modules take place on the ESMT campus in Berlin and four are located around the globe.

Curriculum and course availability are subject to change at any time. Visit our [website](#) for the latest updates.

2024

Module 7*

September 16 - 21
6 days

Broadening your Expertise Electives:

- Organizing for Innovation/Global Strategies
- Diversity, Equity, Inclusion/Design Thinking
- Leading Through Networks/Sustainable Energy Future
- Managing Business Integrity/Agile Leadership

Coaching Day

October 26, 2024
(online)

** Applied Learning Project (modules 6,7,8):
Final report with faculty guidance including applied field work with your company.*

Module 8*

November 18 - 23
6 days

Capitalizing on Opportunities and Overcoming Challenges

- Strategic Entrepreneurship
- Digital Business Strategies
- Negotiations
- Total Impact Performance

2025

Module 9

March 3 - 8
7 days (abroad)

Discovering New Realities

- International Field Seminar (IFS)

Module 10

April 7 - 12
4 days

Creating a Better World

- Human well-being and career crucibles
- Executive presence and communication
- Advanced ESG
- Coaching Day
- Governance and Politics



Leadership Development: Leadership in Practice workshops are conducted throughout the program.

Coaching: Three group coaching sessions are held during the program, two online, and one in person. Individual coaching sessions are offered to help further your professional development.

Self-study: Between modules students pursue independent study, which includes pre- and post-module reading, assignments, case studies, group work, and the final report.

Curriculum and course availability are subject to change at any time. Visit our [website](#) for the latest updates.



BENEFITS FOR YOUR CAREER

Share your experience with a peer-group of managers and gain from their collective experience and insights

Grow academically and professionally while maintaining your work-life balance

BENEFITS FOR YOU

Apply new skills immediately through unique course assignments and integrated project structure

Build a strong network and connections across industries

Receive individualized career and leadership development advice

Cross-cultural competencies via collaboration with diverse participants

Exposure to the best practices of other companies

Company-focused projects delivering immediate improvement to daily business operations

BENEFITS FOR YOUR EMPLOYER

Fresh input and new ideas

Growth potential via your enhanced strategic leadership skills and entrepreneurial thinking

Top talent retention through professional training

MAKING THE CASE TO YOUR EMPLOYER

Undertaking an Executive MBA offers immediate benefits for your employer. As a result, many employers will choose to financially support your participation in the EMBA program.

The ESMT admissions team offer in person support to you as you approach the initial conversation with your employer, providing an example business case and one-to-one consultations. Speak to your admissions manager to find out more.

Final project examples

In the final project, you will apply what you have learned during the EMBA to your employer or own business.

Previous EMBA participants have tackled the following challenges:

- Evaluating make/buy strategies for radical innovations in a complex manufacturing industry
- Identifying barriers to and incentives for adopting energy efficient technologies in the European steel industry
- Attracting and retaining highly skilled workforce in emerging markets
- Increasing market share with multi-channel marketing: an approach to design and review distribution channels

FINDING WORK / LIFE / EMBA BALANCE

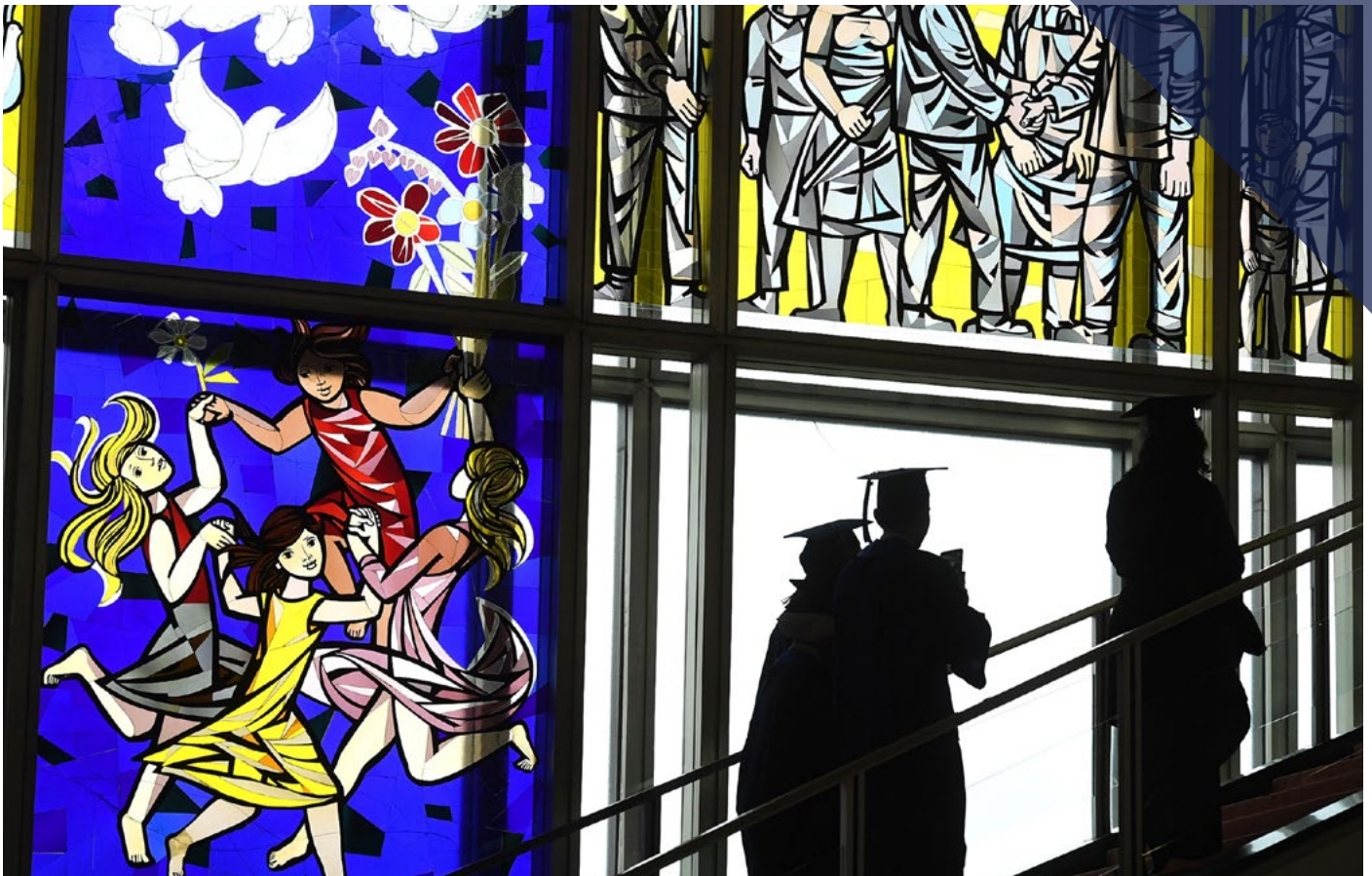
The Executive MBA is a part-time program, designed to be undertaken alongside the existing demands of your job and personal life. The modular format of the program allows you to find balance between all of your responsibilities:

In-person learning takes place roughly every two months. The **six Berlin modules** take place on our beautiful campus in the heart of the city, and **four modules take place abroad.**

Between modules, you are expected to dedicate around **10-15 hours per week** to your studies.

You can **continue advancing your career** and contributing to your organization, while also keeping obligations to family and friends.

We encourage you to engage your family with your EMBA learning experience. ESMT organizes a Family Day during the program, when you can invite your friends and loved ones to Berlin to experience MBA life. You'll also celebrate your achievements with your loved ones in a grand graduation and evening ball at ESMT's historic facilities.





APPLICATION AND ADMISSION



Application steps

- 1** **Initial assessment** for self-funded candidates or **company nomination** for sponsored candidates
- 2** Candidate sends CV for **pre-evaluation** or ESMT receives **nomination**
- 3** Choose the ESMT **Admission Test** or prepare for either GMAT, GRE or the GMAC Executive Assessment.
- 4** **Complete online application** (and TOEFL or equivalent, if required)
- 5** Complete **admissions interview** & ESMT Admission Test, if applicable
- 6** **Admissions Committee decision**

TO APPLY YOU WILL NEED

- At least seven years of professional experience, including three years of managerial experience with an emphasis on leadership and achievements (managing people, processes, or budgets)
- An undergraduate degree or equivalent professional qualification
- Strong ESMT Admission Test or GMAT/GRE/GMAC Executive Assessment test scores
- Personal interview with ESMT program director or Faculty member

Start your application now >>>

TUITION AND FEES

€ 64,800

The program fee is €64,800 and is payable across three calendar years.

Scholarships: For self-funded candidates, ESMT offers partial merit-based scholarships for top applicants.

Please refer to our [website](#) for more info.

Loans: ESMT offers access to alumni-funded loans through Prodigy Finance or the unique scheme from Brain Capital.

Title IV student and GI Bill loans are available to US citizens who study at ESMT.

Learn more >>>

ONLINE APPLICATION DEADLINES

EMBA admissions operates a rolling selection process with available places in the class filled on a continual basis.

Space in the class is limited and early application is strongly suggested.

Check out the dedicated page on our website for the updated deadlines.

Learn more >>>

TAX DEDUCTIONS

Many countries allow tuition for higher education, and related costs, to count as tax deductible expenses.

Please check with your tax advisor to assess your personal situation.



EMBA CLASS PROFILE

Cohort 2022

Average age

39 

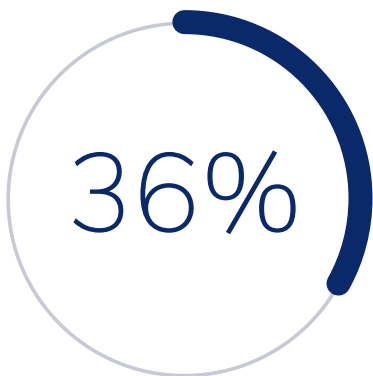
Average work experience (year)

14 

Unique nationalities

25 

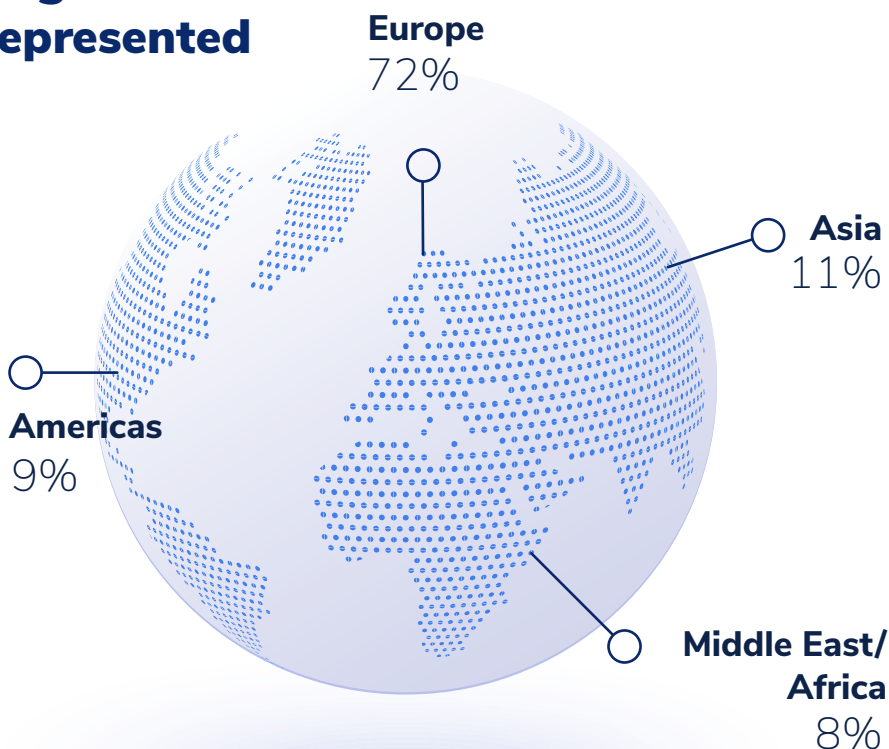
Women



International

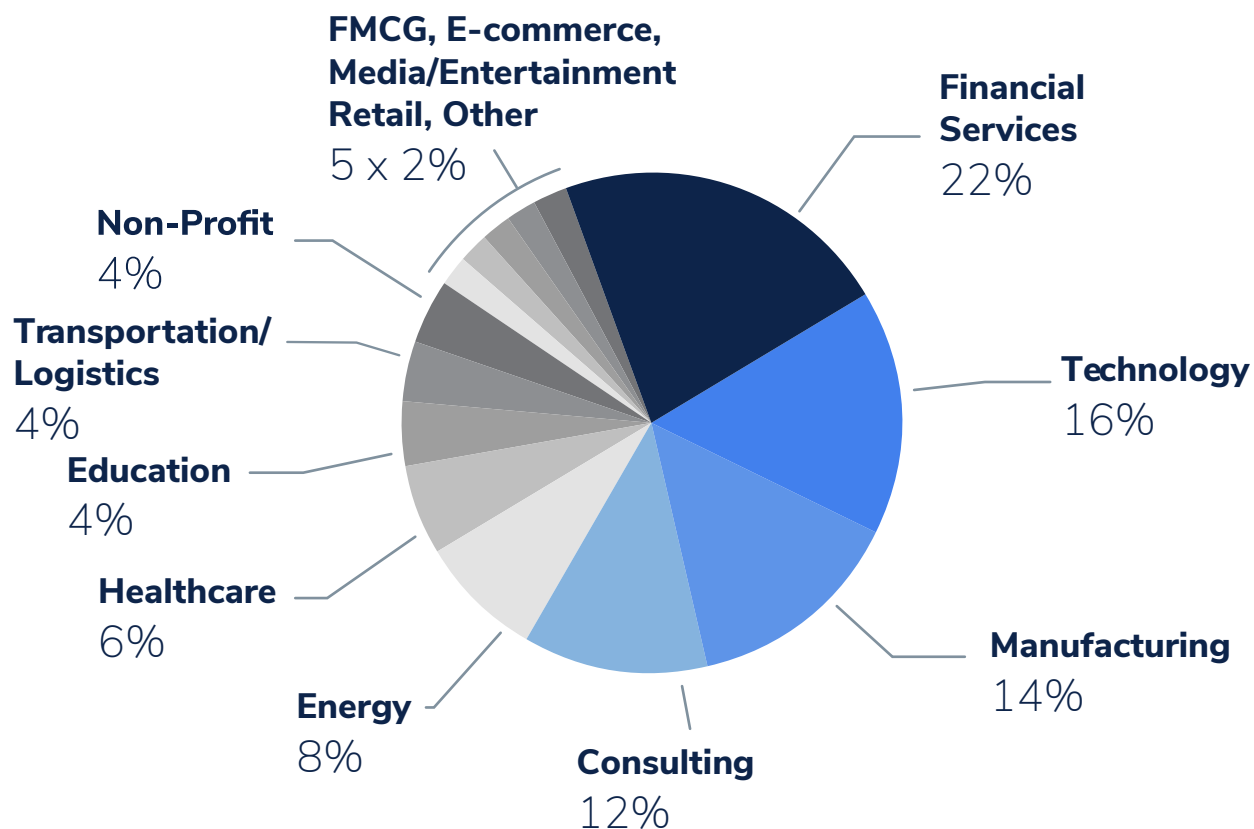


Regions represented

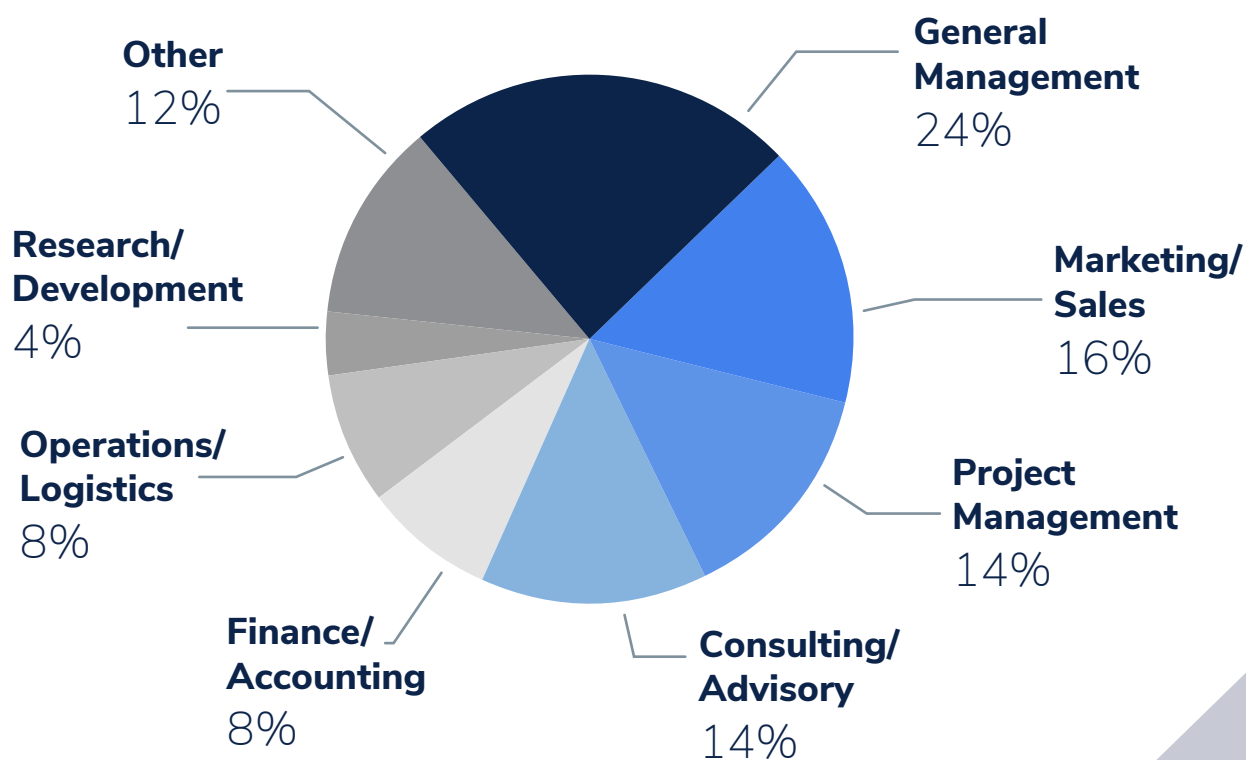


Belarus
Brazil
Canada
China
Colombia
Costa Rica
Croatia
Egypt
France
Germany
India
Iran
Italy
Latvia
Mexico
Netherlands
Poland
Russia
South Africa
Spain
Switzerland
Tunisia
Türkiye
Ukraine
United Kingdom

INDUSTRY BACKGROUND



JOB FUNCTION



Join us:



ESMT
BERLIN

ESMT Berlin is ranked as the best business school in Germany and in the top 10 in Europe.

Founded by 25 leading global companies, ESMT offers master's, MBA, and PhD programs, as well as executive education on its campus in Berlin, in locations around the world, online, and in a blended format of online and on-location.

Focusing on leadership, innovation, and analytics, its diverse faculty publishes outstanding research in top academic journals. The international business school provides an interdisciplinary platform for discussion of politics, business, and academia.

ESMT is a non-profit private institution of higher education, accredited by AACSB, AMBA, EQUIS, and Wissenschaftsrat, and is committed to diversity, equity, and inclusion across all its activities and communities.

esmt.berlin



Founders and benefactors:

